

NATURE IS OUR INNOVATION MASTER!

www.fmtgroup.al

fmt group
energy power

PRODUCTS



QUALITY GUARANTEE PERFORMANCE

ENERGY POWER

FMT GROUP is one of the leading genset manufacturers in Albania. We manufacture high-quality generators having optimal fuel economy, low maintenance and long life. Our company offers seriousness, fast services technically approved, qualified engineering, technical staff and production of diesel generator sets proper to operate in all climate conditions with high performance.

We possess a production line for the generator with the best brands, accompanied by OEM Letters and a high qualified staff who is occupied on the whole process of designing, manufacturing the generators and exporting them all over the world, according to the world quality standards.



POWERFUL ENGINE

Our factories has production which to create safety powerful products



EXPERIENCE

Fmt Group has one of the most extensive technical service team strategy in the energy solutions industry



WARRANTY

All Fmt Group products has 2 years warranty

BEST BRANDS

ENGINE



ALTERNATOR





GENERATOR

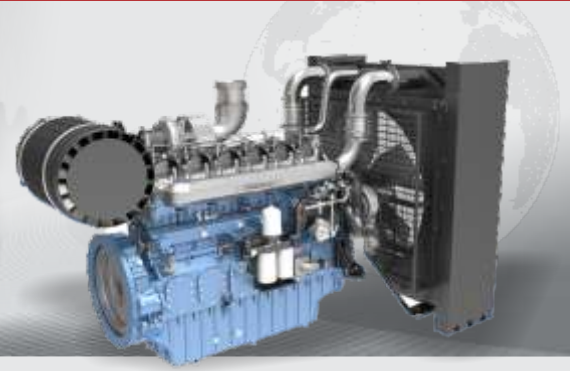
■ 1-3700 kVA

- ◆ DIESEL GENERATOR SET
- ◆ INDUSTRIAL GENSET
- ◆ PORTABLE GENSET
- ◆ CO GENERATION
- ◆ GENERATOR POWER PLANT
- ◆ SYNCHRONIZED GENERATOR



- | | |
|------------------------|-------------------|
| ✓ 28 years experience | ✓ Timely Delivery |
| ✓ High Quality Product | ✓ Committed Team |
| ✓ Development solution | ✓ High Warranty |

70-75 dB(A)



BAUDOIN POWER RANGE

22 - 1400 kVA

MOTEURS Baudouin

STAMFORD

GENSET MODEL	BAUDOIN ENGINE MODEL	STAMFORD ALTERNATOR MODEL	50Hz/400V		DIMENSIONS (mm)		WEIGHT (kg)		FUEL TANK (lt)
			kVA ESP	kVA PRP	OPEN SKID	CANOPIED	OPEN SKID	CANOPIED	CAPACITY lt
					W x L x H	W x L x H	kg	kg	
FB 22 S	4M06G22/5	SOL2-G	22	20	1100 x 1900 x 1170	1100 x 1900 x 1270	575	719	140
FB 33 S	4M06G33/5	SOL2-P	33	30	1100 x 2200 x 1370	1100 x 2200 x 1470	632	817	165
FB 45 S	4M06G44/5	S1L2-K	45	41	1100 x 2200 x 1370	1100 x 2200 x 1470	682	867	165
FB 50 S	4M06G50/5	S1L2-N	50	45	1100 x 2200 x 1370	1100 x 2200 x 1470	790	975	165
FB 55 S	4M06G55/5	S1L2-R	55	50	1100 x 2200 x 1370	1100 x 2200 x 1470	790	975	165
FB 70 S	4M11G70/5	S1L2-Y	70	63	1100 x 2500 x 1370	1100 x 2500 x 1470	1209	1408	190
FB 91 S	4M11G90/5	UCI224G	91	82	1100 x 3000 x 1500	1100 x 3000 x 1600	1284	1548	235
FB 110 S	4M11G110/5	UCI274C	110	99	1100 x 3000 x 1500	1100 x 3000 x 1600	1365	1629	235
FB 150 S	6M11G150/5	UCI274E	150	135	1100 x 3000 x 1500	1100 x 3000 x 1600	1496	1760	235
FB 165 S	6M11G165/5	UCI274F	165	149	1100 x 3000 x 1500	1100 x 3000 x 1600	1534	1798	235
FB 175 S	6M16G220/5	UCI274F	175	158	1200 x 3300 x 1750	1200 x 3300 x 1850	2023	2348	350
FB 200 S	6M16G220/5	UCI274G	200	180	1200 x 3300 x 1750	1200 x 3300 x 1850	2073	2398	350
FB 220 S	6M16G220/5	UCI274H	220	198	1200 x 3300 x 1750	1200 x 3300 x 1850	2119	2444	350
FB 250 S	6M16G250/5	UCDI274J	250	225	1300 x 3800 x 1750	1300 x 3800 x 1850	2387	2866	530
FB 275 S	6M16G275/5	UCDI274K	275	248	1300 x 3800 x 1750	1300 x 3800 x 1850	2397	2876	530
FB 330 S	6M16G330/5	HCI444D	330	297	1300 x 3800 x 1750	1300 x 3800 x 1850	2617	3096	530
FB 385 S	6M21G385/5	HCI444E	385	347	1700 x 4500 x 2200	1700 x 4500 x 2300	3054	3835	1000
FB 450 S	6M21G440/5	HCI444F	450	405	1700 x 4500 x 2200	1700 x 4500 x 2300	3190	3971	1000
FB 500 S	6M21G500/5	HCI544C	500	450	1700 x 4500 x 2200	1700 x 4500 x 2300	3361	4142	1000
FB 550 S	6M26G550/5	HCI544C	550	495	1700 x 5000 x 2300	1700 x 5000 x 2400	4580	5388	1500
FB 610 S	6M33G660/5	HCI544D	610	549	1700 x 5000 x 2300	1700 x 5000 x 2400	5049	5857	1500
FB 665 S	6M33G660/5	HCI544E	665	599	1700 x 5000 x 2300	1700 x 5000 x 2400	5199	6007	1500
FB 715 S	6M33G715/5	HCI544F	715	644	1700 x 5000 x 2300	1700 x 5000 x 2400	5341	6149	1500
FB 750 S	6M33G750/5	HCI544F	750	675	1700 x 5500 x 2400	1700 x 5500 x 2500	5509	6429	1700
FB 825 S	6M33G825/5	HCI634G	825	743	1700 x 5500 x 2400	1700 x 5500 x 2500	5789	6709	1700
FB 900 S	12M26G900/5	HCI634G	900	810	1700 x 5500 x 2400	1700 x 5500 x 2500	6909	7829	1700
FB 1000 S	12M26G1000/5	HCI634H	1000	900	2300 x 7500 x 2400	2300 x 7500 x 2500	8077	9577	2000
FB 1100 S	12M26G1100/5	HCI634J	1100	990	2300 x 7500 x 2400	2300 x 7500 x 2500	8239	9739	2000
FB 1250 S	12M33G1250/5	HCI634K	1250	1125	2300 x 7500 x 2400	2300 x 7500 x 2500	9331	10831	2000
FB 1400 S	12M33G1400/5	PI734A	1400	1260	2300 x 7500 x 2400	2300 x 7500 x 2500	9550	11050	2000



70-75 dB(A)



CUMMINS POWER RANGE

27 - 880 kVA



GENSET MODEL	CUMMINS ENGINE MODEL	MECC ALTE ALTERNATOR MODEL	50Hz/400V		DIMENSIONS (mm)		WEIGHT (kg)		FUEL TANK (lt)
			kVA ESP	kVA PRP	OPEN SKID	CANOPIED	OPEN SKID	CANOPIED	CAPACITY lt
					W x L x H	W x L x H	kg	kg	
FCU 27 MC	X2.5-G2	ECP28 - 2L4	27	24	1100 x 1900 x 1170	1100 x 1900 x 1270	606	750	140
FCU 40 MC	X3.3-G1	ECP32 - 2S4	40	36	1100 x 2200 x 1370	1100 x 2200 x 1470	715	900	165
FCU 48 MC	S3.8-G4	ECP32 - 3S4	48	43	1100 x 2200 x 1370	1100 x 2200 x 1470	865	1050	165
FCU 56 MC	S3.8-G6	ECP32 - 1M4	56	50	1100 x 2200 x 1370	1100 x 2200 x 1470	895	1080	165
FCU 67 MC	S3.8-G7	ECP32 - 2M4	67	60	1100 x 2500 x 1370	1100 x 2500 x 1470	994	1193	190
FCU 110 MC	6BTA5.9-G5	ECP34 - 2S4	110	99	1100 x 3000 x 1500	1100 x 3000 x 1600	1219	1483	235
FCU 150 MC	6BTA5.9-G7	ECP34 - 1L4	150	135	1200 x 3300 x 1750	1200 x 3300 x 1850	1576	1901	350
FCU 175 MC	6BTA5.9-G7	ECP34 - 3L4	175	158	1200 x 3300 x 1750	1200 x 3300 x 1850	1626	1951	350
FCU 220 MC	QSB7G5	ECO38 - 2S4	220	198	1200 x 3300 x 1750	1200 x 3300 x 1850	1635	1960	350
FCU 275 MC	QSL9-G3	ECO38 - 1L4	275	248	1300 x 3800 x 1750	1300 x 3800 x 1850	2124	2603	530
FCU 330 MC	QSL9-G5	ECO38 - 2L4	330	297	1300 x 3800 x 1750	1300 x 3800 x 1850	2209	2688	530
FCU 350 MC	QSL9-G5	ECO38 - 3L4	350	315	1300 x 3800 x 1750	1300 x 3800 x 1850	2349	2828	530
FCU 400 MC	NTA855G4	ECO40 - 1S4	400	360	1700 x 4500 x 2200	1700 x 4500 x 2300	3287	4068	1000
FCU 500 MC	QSX15-G6	ECO40 - 3S4	500	450	1700 x 4500 x 2200	1700 x 4500 x 2300	3715	4496	1000
FCU 550 MC	QSX15-G8	ECO40 - 3S4	550	495	1700 x 4500 x 2200	1700 x 4500 x 2300	3729	4510	1000
FCU 700 MC	VTA28-G5	ECO40 - 2L4	700	630	1700 x 5000 x 2300	1700 x 5000 x 2400	5505	6313	1500
FCU 880 MC	QSK23-G3	ECO43 - 1S4	880	792	1700 x 5500 x 2400	1700 x 5500 x 2500	6312	7232	1700



70-75 dB(A)

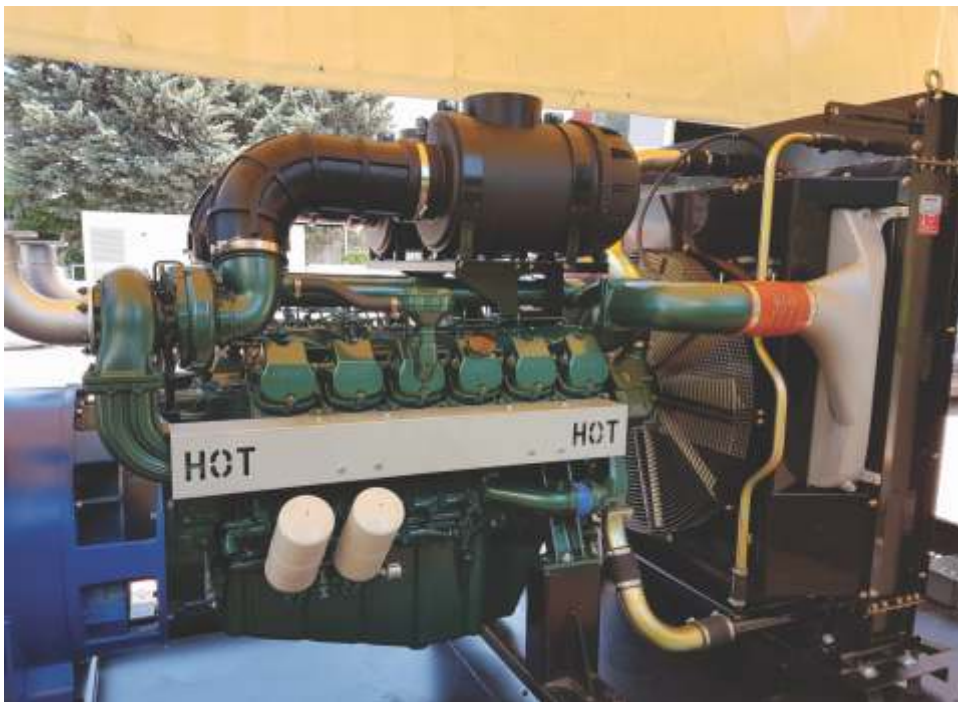


DOOSAN POWER RANGE

95 - 830 kVA



GENSET MODEL	DOOSAN ENGINE MODEL	MARELLI ALTERNATOR MODEL	50Hz/400V		DIMENSIONS (mm)		WEIGHT (kg)		FUEL TANK (lt)
			kVA ESP	kVA PRP	OPEN SKID	CANOPIED	OPEN SKID	CANOPIED	CAPACITY lt
					W x L x H	W x L x H	kg	kg	
FDD 95 M	D1146	MXB 225 SB4	95	86	1100 x 3000 x 1500	1100 x 3000 x 1600	1366	1630	235
FDD 110 M	D1146T	MXB 225 MA4	110	99	1100 x 3000 x 1500	1100 x 3000 x 1600	1471	1735	235
FDD 135 M	D1146T	MXB 225 MB4	135	122	1100 x 3000 x 1500	1100 x 3000 x 1600	1490	1754	235
FDD 178 M	DP086TA	MXB 225 LC4	178	160	1200 x 3300 x 1750	1200 x 3300 x 1850	1710	2035	350
FDD 200 M	P086TI-1	MJB250MB4	200	180	1200 x 3300 x 1750	1200 x 3300 x 1850	1815	2140	350
FDD 232 M	P086TI	MJB250LA4	232	209	1200 x 3300 x 1750	1200 x 3300 x 1850	1885	2210	350
FDD 255 M	DP086LA	MJB250LB4	255	230	1300 x 3800 x 1750	1300 x 3800 x 1850	2102	2581	530
FDD 275 M	P126TI	MJB250LB4	275	248	1300 x 3800 x 1750	1300 x 3800 x 1850	2232	2711	530
FDD 330 M	P126TI-II	MJB315SA4	330	297	1300 x 3800 x 1750	1300 x 3800 x 1850	2226	2705	530
FDD 385 M	P158LE-1	MJB315SB4	385	347	1700 x 4500 x 2200	1700 x 4500 x 2300	2724	3505	1000
FDD 410 M	P158LE-1	MJB315MA4	410	369	1700 x 4500 x 2200	1700 x 4500 x 2300	2864	3645	1000
FDD 450 M	P158LE	MJB315MA4	450	405	1700 x 4500 x 2200	1700 x 4500 x 2300	2874	3655	1000
FDD 486 M	P158LE	MJB315MB4	486	438	1700 x 4500 x 2200	1700 x 4500 x 2300	3004	3785	1000
FDD 510 M	DP158LC	MJB355SA4	510	459	1700 x 4500 x 2200	1700 x 4500 x 2300	3259	4040	1000
FDD 585 M	DP158LD	MJB355SB4	585	527	1700 x 5000 x 2300	1700 x 5000 x 2400	3662	4470	1500
FDD 625 M	DP180LA	MJB355SB4	625	563	1700 x 5000 x 2300	1700 x 5000 x 2400	3781	4589	1500
FDD 710 M	DP180LB	MJB355MA4	710	639	1700 x 5000 x 2300	1700 x 5000 x 2400	4031	4839	1500
FDD 750 M	DP222LB	MJB355MA4	750	675	1700 x 5000 x 2300	1700 x 5000 x 2400	4230	5038	1500
FDD 830 M	DP222LC	MJB355MB4	830	747	1700 x 5500 x 2400	1700 x 5500 x 2500	4608	5528	1700





70-75 dB(A)

FMT POWER RANGE

12 - 500 kVA

fmt engine
energy power

fmt alternator
energy power

GENSET MODEL	FMT ENGINE MODEL	FMT ALTERNATOR MODEL	50Hz/400V		DIMENSIONS (mm)		WEIGHT (kg)		FUEL TANK (lt)
			kVA ESP	kVA PRP	OPEN SKID	CANOPIED	OPEN SKID	CANOPIED	CAPACITY lt
					W x L x H	W x L x H	kg	kg	
FGR 12 F	K0-4L-DN	FA12XP4	12	11	1100 x 1900 x 1170	1100 x 1900 x 1270	500	644	140
FGR 17 F	K0-4L-DN	FA18XP4	17	16	1100 x 1900 x 1170	1100 x 1900 x 1270	505	649	140
FGR 22 F	K1-4L-DN	FA22XP4	22	20	1100 x 1900 x 1170	1100 x 1900 x 1270	511	655	140
FGR 28 F	K2-4L-DN	FA28XP4	28	26	1100 x 2200 x 1370	1100 x 2200 x 1470	719	904	165
FGR 35 F	K2-4L-DN	FA35XP4	35	32	1100 x 2200 x 1370	1100 x 2200 x 1470	743	928	165
FGR 45 F	K3-4L-DN	FA45XP4	45	41	1100 x 2200 x 1370	1100 x 2200 x 1470	779	964	165
FGR 55 F	K3-4L-DN	FA55XP4	55	50	1100 x 2200 x 1370	1100 x 2200 x 1470	853	1038	165
FGR 70 F	K4-4L-DN	FA70XP4	70	64	1100 x 2500 x 1370	1100 x 2500 x 1470	907	1106	190
FGR 83 F	K5-4L-DN	FA83XP4	83	76	1100 x 2500 x 1370	1100 x 2500 x 1470	962	1161	190
FGR 95 F	K6-4L-DN	FA95XP4	95	86	1100 x 2500 x 1370	1100 x 2500 x 1470	1062	1261	190
FGR 110 F	K7-4L-DN	FA110XP4	110	100	1100 x 3000 x 1500	1100 x 3000 x 1600	1199	1463	235
FGR 138 F	K8-6L-DN	FA138XP4	138	126	1100 x 3000 x 1500	1100 x 3000 x 1600	1304	1568	235
FGR 155 F	K8-6L-DN	FA155XP4	155	141	1100 x 3000 x 1500	1100 x 3000 x 1600	1324	1588	235
FGR 165 F	K9-6L-DN	FA165XP4	165	150	1100 x 3000 x 1500	1100 x 3000 x 1600	1329	1593	235
FGR 182 F	KX-6L-DN	FA182XP4	182	166	1200 x 3300 x 1750	1200 x 3300 x 1850	1595	1920	350
FGR 200 F	KX-6L-DN	FA206XP4	206	182	1200 x 3300 x 1750	1200 x 3300 x 1850	1604	1929	350
FGR 250 F	KX1-6L-DN	FA250XP4	250	227	1200 x 3300 x 1750	1200 x 3300 x 1850	2081	2406	350
FGR 275 F	KX2-6L-DN	FA275XP4	275	250	1300 x 3800 x 1750	1300 x 3800 x 1850	2265	2744	530
FGR 330 F	KX3-6L-DN	FA330XP4	330	300	1300 x 3800 x 1750	1300 x 3800 x 1850	2432	2911	530
FGR 385 F	KX4-6L-DN	FA385XP4	385	350	1700 x 4200 x 2200	1700 x 4200 x 2300	2827	3390	900
FGR 420 F	KX5-6L-DN	FA420XP4	420	382	1700 x 4200 x 2200	1700 x 4200 x 2300	2877	3440	900
FGR 450 F	KX6-6L-DN	FA450XP4	450	409	1700 x 4200 x 2200	1700 x 4200 x 2300	2919	3482	900
FGR 500 F	KX7-6L-DN	FA500XP4	500	455	1700 x 4200 x 2200	1700 x 4200 x 2300	2994	3557	900



70-75 dB(A)



FMT POWER RANGE

330 - 1265 kVA

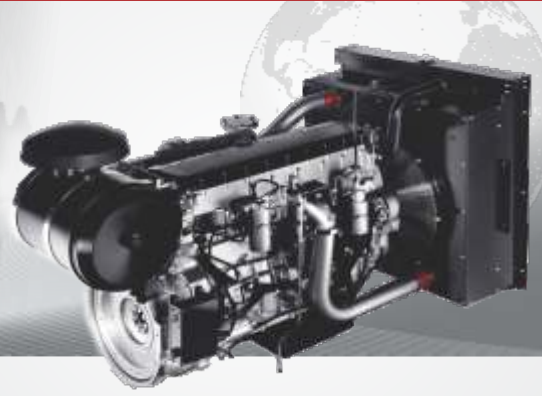
fimt engine
energy power

fimt alternator
energy power

GENSET MODEL	FMT ENGINE MODEL	FMT ALTERNATOR MODEL	50Hz/400V		DIMENSIONS (mm)		WEIGHT (kg)		FUEL TANK (lt)
			kVA ESP	kVA PRP	OPEN SKID	CANOPIED	OPEN SKID	CANOPIED	CAPACITY lt
					W x L x H	W x L x H	kg	kg	
FF 330 F	RV1-6V11L-DS2	FA330XP4	330	297	1300 x 3800 x 1750	1300 x 3800 x 1850	2551	3030	530
FF 350 F	RV2-6V11L-DS2	FA350XP4	350	315	1300 x 3800 x 1750	1300 x 3800 x 1850	2573	3052	530
FF 385 F	RV3-6V11L-DS2	FA385XP4	385	347	1700 x 4500 x 2200	1700 x 4500 x 2300	2862	3643	1000
FF 420 F	RV4-6V11L-DS2	FA420XP4	420	378	1700 x 4500 x 2200	1700 x 4500 x 2300	2892	3673	1000
FF 450 F	RV5-8V15L-DS2	FA450XP4	450	405	1700 x 4500 x 2200	1700 x 4500 x 2300	3282	4063	1000
FF 500 F	RV6-8V15L-DS2	FA500XP4	500	450	1700 x 4500 x 2200	1700 x 4500 x 2300	3357	4138	1000
FF 550 F	RV7-8V15L-DS2	FA550XP4	550	495	1700 x 4500 x 2200	1700 x 4500 x 2300	3460	4241	1000
FF 620 F	RV8-8V15L-DS2	FA620XP4	620	558	1700 x 5000 x 2300	1700 x 5000 x 2400	3810	4618	1500
FF 660 F	RV9-12V22L-DS2	FA660XP4	660	594	1700 x 5000 x 2300	1700 x 5000 x 2400	4684	5492	1500
FF 688 F	RV9-12V22L-DS2	FA688XP4	688	619	1700 x 5000 x 2300	1700 x 5000 x 2400	4757	5565	1500
FF 715 F	RVX-12V22L-DS2	FA750XP4	715	644	1700 x 5000 x 2300	1700 x 5000 x 2400	4807	5615	1500
FF 750 F	RVX1-12V22L-DS2	FA750XP4	750	675	1700 x 5000 x 2300	1700 x 5000 x 2400	4807	5615	1500
FF 770 F	RVX1-12V22L-DS2	FA770XP4	770	693	1700 x 5500 x 2400	1700 x 5500 x 2500	5112	6032	1700
FF 825 F	RVX1-12V22L-DS2	FA825XP4	825	743	1700 x 5500 x 2400	1700 x 5500 x 2500	5142	6062	1700
FF 880 F	RVX2-12V22L-DS2	FA880XP4	880	792	1700 x 5500 x 2400	1700 x 5500 x 2500	5182	6102	1700
FF 915 F	RVX3-16V30L-DS2	FA1000XP4	915	824	2300 x 7500 x 2400	2300 x 7500 x 2500	6992	8492	2000
FF 1000 F	RVX4-16V30L-DS2	FA1000XP4	1000	900	2300 x 7500 x 2400	2300 x 7500 x 2500	6992	8492	2000
FF 1100 F	RVX5-16V30L-DS2	FA1100XP4	1100	990	2300 x 7500 x 2400	2300 x 7500 x 2500	7087	8587	2000
FF 1265 F	RVX6-16V30L-DS2	FA1265XP4	1265	1139	2300 x 7500 x 2400	2300 x 7500 x 2500	7337	8837	2000



70-75 dB(A)



IVECO POWER RANGE

33 - 660 kVA



GENSET MODEL	IVECO FPT ENGINE MODEL	MARELLI ALTERNATOR MODEL	50Hz/400V		DIMENSIONS (mm)		WEIGHT (kg)		FUEL TANK (lt)
			kVA ESP	kVA PRP	OPEN SKID	CANOPIED	OPEN SKID	CANOPIED	CAPACITY lt
					W x L x H	W x L x H	kg	kg	
FGI 33 M	S 8000 AM1	MXB 180 SB4	33	30	1100 x 2200 x 1370	1100 x 2200 x 1470	729	914	165
FGI 55 M	N45 AM2	MXB 180 LA4	55	50	1100 x 2200 x 1370	1100 x 2200 x 1470	831	1016	165
FGI 67 M	N45 SM1A	MXB 180 LB4	67	60	1100 x 2500 x 1370	1100 x 2500 x 1470	933	1132	190
FGI 83 M	N45 SM3	MXB 225 SA4	83	75	1100 x 2500 x 1370	1100 x 2500 x 1470	1010	1209	190
FGI 92 M	N45 SM3	MXB 225 SB4	92	83	1100 x 2500 x 1370	1100 x 2500 x 1470	1036	1235	190
FGI 110 M	N45 TM2A	MXB 225 MA4	110	99	1100 x 2500 x 1370	1100 x 2500 x 1470	1131	1330	190
FGI 135 M	N45 TM3	MXB 225 MB4	135	122	1100 x 3000 x 1500	1100 x 3000 x 1600	1187	1451	235
FGI 145 M	N67 TM2A	MXB 225 LA4	145	131	1100 x 3000 x 1500	1100 x 3000 x 1600	1388	1652	235
FGI 178 M	N67 TM4	MXB 225 LC4	178	160	1100 x 3000 x 1500	1100 x 3000 x 1600	1422	1686	235
FGI 192 M	N67 TM4	MJB250MB4	192	173	1200 x 3300 x 1750	1200 x 3300 x 1850	1643	1968	350
FGI 227 M	N67 TM7	MJB250LA4	227	204	1200 x 3300 x 1750	1200 x 3300 x 1850	1713	2038	350
FGI 275 M	N67 TE8W	MJB250LB4	275	248	1200 x 3300 x 1750	1200 x 3300 x 1850	1763	2088	350
FGI 330 M	C87 TE4	MJB315SA4	330	297	1300 x 3800 x 1750	1300 x 3800 x 1850	2470	2949	530
FGI 350 M	C87 TE4	MJB315SB4	350	315	1300 x 3800 x 1750	1300 x 3800 x 1850	2560	3039	530
FGI 385 M	C13 TE2A	MJB315SB4	385	347	1300 x 3800 x 1750	1300 x 3800 x 1850	2736	3215	530
FGI 450 M	C13 TE3A	MJB315MA4	450	405	1700 x 4200 x 2200	1700 x 4200 x 2300	3070	3633	900
FGI 500 M	C13 TE6W	MJB315MB4	500	450	1700 x 4500 x 2200	1700 x 4500 x 2300	3379	4160	1000
FGI 550 M	C13 TE7W	MJB355SA4	550	495	1700 x 4500 x 2200	1700 x 4500 x 2300	3429	4210	1000
FGI 625 M	C16 TE1W	MJB355SB4	625	563	1700 x 5000 x 2300	1700 x 5000 x 2400	3913	4721	1500
FGI 660 M	C16 TE1W	MJB355MA4	660	594	1700 x 5000 x 2300	1700 x 5000 x 2400	4163	4971	1500



70-75 dB(A)



PERKINS POWER RANGE

10 - 880 kVA



GENSET MODEL	PERKINS ENGINE MODEL	MECC ALTE ALTERNATOR MODEL	50Hz/400V		DIMENSIONS (mm)		WEIGHT (kg)		FUEL TANK (lt)
			kVA ESP	kVA PRP	OPEN SKID	CANOPIED	OPEN SKID	CANOPIED	CAPACITY lt
					W x L x H	W x L x H	kg	kg	
FPE 10 MC	403A-11G	ECP3 - 1L4	10	9	1100 x 1900 x 1170	1100 x 1900 x 1270	456	600	140
FPE 15 MC	403A-15G1	ECP3 - 2L4	15	14	1100 x 1900 x 1170	1100 x 1900 x 1270	466	610	140
FPE 22 MC	404A-22G1	ECP28 - M4	22	20	1100 x 1900 x 1170	1100 x 1900 x 1270	548	692	140
FPE 33 MC	1103A-33G	ECP28 - VI4	33	30	1100 x 2200 x 1370	1100 x 2200 x 1470	793	978	165
FPE 48 MC	1103A-33TG1	ECP32 - 3S4	48	43	1100 x 2200 x 1370	1100 x 2200 x 1470	831	1016	165
FPE 51 MC	1103A-33TG1	ECP32 - 1M4	51	46	1100 x 2200 x 1370	1100 x 2200 x 1470	861	1046	165
FPE 67 MC	1103A-33TG2	ECP32 - 2M4	67	60	1100 x 2500 x 1370	1100 x 2500 x 1470	910	1109	190
FPE 72 MC	1104A-44TG1	ECP32 - 2M4	72	65	1100 x 2500 x 1370	1100 x 2500 x 1470	957	1156	190
FPE 88 MC	1104A-44TG2	ECP32 - 4L4	88	79	1100 x 2500 x 1370	1100 x 2500 x 1470	1007	1206	190
FPE 114 MC	1104C-44TAG2	ECP34 - 2S4	114	102	1100 x 3000 x 1370	1100 x 3000 x 1470	1228	1492	235
FPE 150 MC	1106A-70TAG1	ECP34 - 1L4	150	135	1200 x 3300 x 1750	1200 x 3300 x 1850	1584	1909	350
FPE 165 MC	1106A-70TAG2	ECP34 - 2L4	165	149	1200 x 3300 x 1750	1200 x 3300 x 1850	1688	2013	350
FPE 200 MC	1106A-70TAG3	ECO38 - 1S4	200	180	1200 x 3300 x 1750	1200 x 3300 x 1850	1707	2032	350
FPE 220 MC	1106A-70TAG4	ECO38 - 2S4	220	198	1200 x 3300 x 1750	1200 x 3300 x 1850	1712	2037	350
FPE 255 MC	1506A-E88TAG2	ECO38 - 3S4	255	230	1300 x 3800 x 1750	1300 x 3800 x 1850	2308	2787	530
FPE 275 MC	1506A-E88TAG3	ECO38 - 1L4	275	248	1300 x 3800 x 1750	1300 x 3800 x 1850	2423	2902	530
FPE 330 MC	1506A-E88TAG5	ECO38 - 2L4	330	297	1300 x 3800 x 1750	1300 x 3800 x 1850	2560	3039	530
FPE 385 MC	2206A-E13TAG2	ECO38 - 3L4	385	347	1700 x 4500 x 2200	1700 x 4500 x 2300	3240	4021	1000
FPE 410 MC	2206A-E13TAG2	ECO40 - 1S4	410	369	1700 x 4500 x 2200	1700 x 4500 x 2300	3375	4156	1000
FPE 440 MC	2206A-E13TAG3	ECO40 - 1S4	440	396	1700 x 4500 x 2200	1700 x 4500 x 2300	3385	4166	1000
FPE 500 MC	2506C-E15TAG1	ECO40 - 3S4	500	450	1700 x 4500 x 2200	1700 x 4500 x 2300	3638	4419	1000
FPE 550 MC	2506C-E15TAG2	ECO40 - 3S4	550	495	1700 x 4500 x 2200	1700 x 4500 x 2300	3653	4434	1500
FPE 600 MC	2806A-E18TAG1A	ECO40 - 1L4	600	540	1700 x 5000 x 2300	1700 x 5000 x 2400	4338	5146	1500
FPE 670 MC	2806A-E18TAG1A	ECO40 - 1.5L4	670	603	1700 x 5000 x 2300	1700 x 5000 x 2400	4394	5202	1500
FPE 735 MC	2806A-E18TAG2	ECO40 - 2L4	735	662	1700 x 5000 x 2300	1700 x 5000 x 2400	4600	5408	1500
FPE 810 MC	4006-23TAG2A	ECO40 - VI4	810	729	1700 x 5500 x 2400	1700 x 5500 x 2500	5340	6260	1700
FPE 880 MC	4006-23TAG3A	ECO43 - 1S4	880	792	1700 x 5500 x 2400	1700 x 5500 x 2500	5517	6437	1700





70-75 dB(A)



SCANIA POWER RANGE / **275 - 780 kVA**  **SCANIA**  **Marelli Motori**
Power Solutions since 1891

GENSET MODEL	SCANIA ENGINE MODEL	MARELLI ALTERNATOR MODEL	50Hz/400V		DIMENSIONS (mm)		WEIGHT (kg)		FUEL TANK (lt)
			kVA ESP	kVA PRP	OPEN SKID	CANOPIED	OPEN SKID	CANOPIED	CAPACITY
					W x L x H	W x L x H	kg	kg	
FSC 275 M	DC09 072A 02-11	MJB 250 LB4	275	248	1300 x 3800 x 1750	1300 x 3800 x 1850	2202	2681	530
FSC 330 M	Dc09 072A 02-13	MJB 315 SA4	330	297	1300 x 3800 x 1750	1300 x 3800 x 1850	2322	2801	530
FSC 410 M	DC13 072A 02-11	MJB 315 MA4	410	369	1700 x 4500 x 2200	1700 x 4500 x 2300	2863	3644	1000
FSC 450 M	DC13 072A 02-12	MJB 315 MA4	450	405	1700 x 4500 x 2200	1700 x 4500 x 2300	2888	3669	1000
FSC 500 M	DC13 072A 02-13	MJB 315 MB4	500	450	1700 x 4500 x 2200	1700 x 4500 x 2300	3028	3809	1000
FSC 560 M	DC13 072A 02-14	MJB 355 SA4	560	504	1700 x 4500 x 2200	1700 x 4500 x 2300	3078	3859	1000
FSC 665 M	DC16 072A 02-11	MJB 355MA4	665	599	1700 x 5000 x 2300	1700 x 5000 x 2400	3996	4804	1500
FSC 725 M	DC16 072A 02-12	MJB 355 MA4	725	653	1700 x 5000 x 2300	1700 x 5000 x 2400	4021	4829	1500
FSC 780 M	DC16 072A 02-13	MJB 355 MB4	780	702	1700 x 5500 x 2400	1700 x 5500 x 2500	4374	5294	1700



70-75 dB(A)



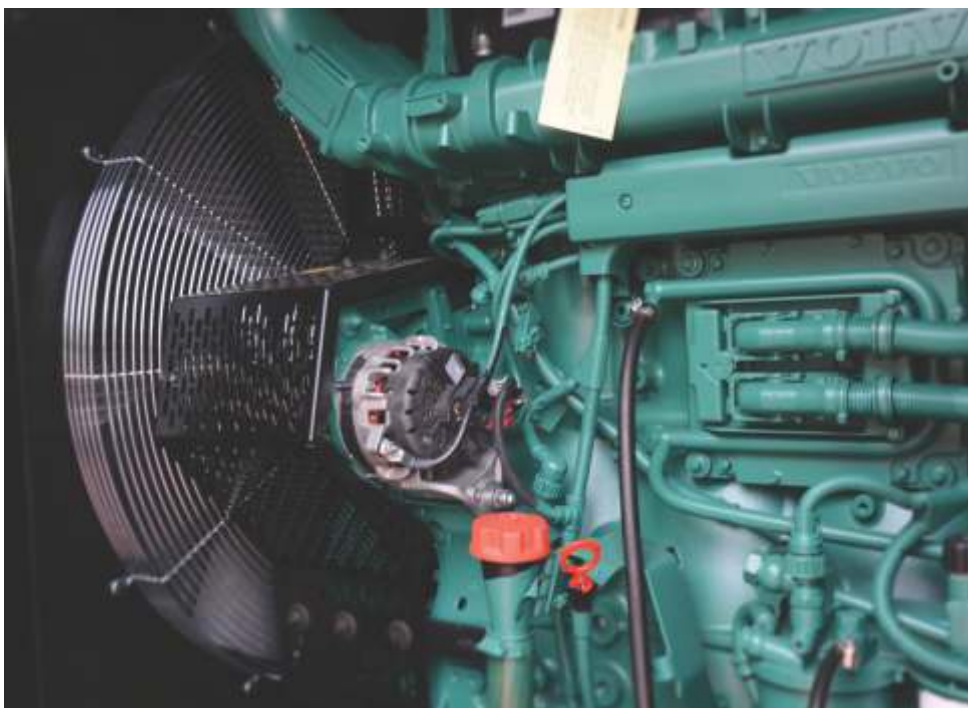
VOLVO POWER RANGE

95 - 780 kVA

VOLVO PENTA

MarelliMotori
Power Solutions since 1891

GENSET MODEL	VOLVO PENTA ENGINE MODEL	MARELLI ALTERNATOR MODEL	50Hz/400V		DIMENSIONS (mm)		WEIGHT (kg)		FUEL TANK (lt)
			kVA ESP	kVA PRP	OPEN SKID	CANOPIED	OPEN SKID	CANOPIED	CAPACITY lt
					W x L x H	W x L x H	kg	kg	
FV 95 M	TD520GE	MXB 225 SB4	95	86	1100 x 2500 x 1370	1100 x 2500 x 1470	1139	1338	190
FV 110 M	TAD531GE	MXB 225 MA4	110	99	1100 x 3000 x 1500	1100 x 3000 x 1600	1247	1511	235
FV 145 M	TAD532GE	MXB 225 LA4	145	131	1100 x 3000 x 1500	1100 x 3000 x 1600	1316	1580	235
FV 170 M	TAD731GE	MXB 225 LC4	170	153	1200 x 3300 x 1750	1200 x 3300 x 1850	1664	1989	350
FV 205 M	TAD732GE	MJB250MB4	205	185	1200 x 3300 x 1750	1200 x 3300 x 1850	1791	2116	350
FV 226 M	TAD733GE	MJB250LA4	226	203	1200 x 3300 x 1750	1200 x 3300 x 1850	1861	2186	350
FV 275 M	TAD734GE	MJB250LB4	275	248	1300 x 3800 x 1750	1300 x 3800 x 1850	2078	2557	530
FV 330 M	TAD1341GE	MJB315SA4	330	297	1300 x 3800 x 1750	1300 x 3800 x 1850	3162	3641	530
FV 350 M	TAD1341GE	MJB315SB4	350	315	1300 x 3800 x 1750	1300 x 3800 x 1850	3252	3731	530
FV 385 M	TAD1342GE	MJB315SB4	385	347	1300 x 3800 x 1750	1300 x 3800 x 1850	3272	3751	530
FV 415 M	TAD1343GE	MJB315MA4	415	374	1700 x 4200 x 2200	1700 x 4200 x 2300	3537	4100	900
FV 450 M	TAD1344GE	MJB315MA4	450	405	1700 x 4500 x 2200	1700 x 4500 x 2300	3603	4384	1000
FV 500 M	TAD1345GE	MJB315MB4	500	450	1700 x 4500 x 2200	1700 x 4500 x 2300	3743	4524	1000
FV 560 M	TAD1641GE	MJB355SA4	560	504	1700 x 4500 x 2200	1700 x 4500 x 2300	4023	4804	1000
FV 625 M	TAD1642GE	MJB355SB4	625	563	1700 x 5000 x 2300	1700 x 5000 x 2400	4426	5234	1500
FV 660 M	TAD1642GE	MJB355MA4	660	594	1700 x 5000 x 2300	1700 x 5000 x 2400	4676	5484	1500
FV 700 M	TWD1643GE	MJB355MA4	700	630	1700 x 5000 x 2300	1700 x 5000 x 2400	5026	5834	1500
FV 730 M	TWD1644GE	MJB355MA4	730	657	1700 x 5000 x 2300	1700 x 5000 x 2400	5423	6231	1500
FV 780 M	TWD1645GE	MJB355MB4	780	702	1700 x 5500 x 2400	1700 x 5500 x 2500	5801	6721	1700





OHSAS 18001:2007



ISO 14001:2015



ISO 9001:2015







AVS

Automatic Voltage Stabilizer

www.fmtstabilizer.com



QUALITY SAFETY WARRANTY



**HIGH EFFICIENCY
BETTER LIFE
GUARANTEE**



General Characteristics

The voltage stabilizer is designed to control and regulate the level of tension that comes from the main network (AEC). Each stage is equipped with a built in microprocessor controller able to control the pressure and the flow and make necessary adjustments to maintain tension in the appropriate values.

Body Design

The mechanical construction of our voltage stabilizers has been designed in industrial type. To monitor the voltage in an easy operating system. Electrical connections have been constructed in a simple modular design so that the service and maintenance of the device can be performed easily.

Full protection

Fmt Group AVS protects your load from all fluctuations of the mains voltage and regulates it. It disconnects the output voltage electro-mechanically when an increase or decrease occurs that is out of limits and prevents all the possible problems by electronic protection.

By-pass System

This device is equipped with a by-pass system that in case of failure can automatically disconnect the voltage stabilizer, the by-pass system saves your voltage stabilizer from suffering any damage.



AVS Automatic Voltage Stabilizer

MONOPHASE

MONOPHASE 5 - 25 KVA SIMPLE LOGIC 160 - 250 V

Dimension					
Model	Power	Weight (kg)	Length (cm)	Width (cm)	Height (cm)
AVS 5 FS160	5 KVA	40	54	40	29
AVS 7.5 FS160	7.5 KVA	48	54	40	29
AVS 10 FS160	10 KVA	57	54	40	29
AVS 15 FS160	15 KVA	66	60	45	30
AVS 20 FS160	20 KVA	126	50	56	85
AVS 25 FS160	25 KVA	135	50	56	85

MONOPHASE 5 - 25 KVA SIMPLE LOGIC 130 - 230 V

Dimension					
Model	Power	Weight (kg)	Length (cm)	Width (cm)	Height (cm)
AVS 5 FS130	5 KVA	40	54	40	29
AVS 7.5 FS130	7.5 KVA	48	54	40	29
AVS 10 FS130	10 KVA	57	54	40	29
AVS 15 FS130	15 KVA	66	60	45	30
AVS 20 FS130	20 KVA	126	50	56	85
AVS 25 FS130	25 KVA	135	50	56	85

MONOPHASE 5 - 25 KVA WITH MICROPROCESSOR 160 - 250 V

Dimension					
Model	Power	Weight (kg)	Length (cm)	Width (cm)	Height (cm)
AVS 5 FM160	5 KVA	40	54	40	29
AVS 7.5 FM160	7.5 KVA	48	54	40	29
AVS 10 FM160	10 KVA	57	54	40	29
AVS 15 FM160	15 KVA	66	60	45	30
AVS 20 FM160	20 KVA	126	50	56	85
AVS 25 FM160	25 KVA	135	50	56	85

MONOPHASE 5 - 25 KVA WITH MICROPROCESSOR 130 - 230 V

Dimension					
Model	Power	Weight (kg)	Length (cm)	Width (cm)	Height (cm)
AVS 5 FM130	5 KVA	40	54	40	29
AVS 7.5 FM130	7.5 KVA	48	54	40	29
AVS 10 FM130	10 KVA	57	54	40	29
AVS 15 FM130	15 KVA	66	60	45	30
AVS 20 FM130	20 KVA	126	50	56	85
AVS 25 FM130	25 KVA	135	50	56	85



STABILIZER TECHNICAL SPECIFICATIONS POWER SUPPLY	Mono Phase 1 Phase stabilizer 1 - 25 kVA	Mono Phase Mono Phase stabilizer 25 kVA
INPUT DATA		
Voltage	160V - 250V + N	130V - 230V + N
Frequency	50Hz ± 1%	50Hz ± 1%
OUTPUT DATA		
Voltage	220V + N	220V + N
Voltage Tolerance	± 1% (linear load)	± 1% (linear load)
High accuracy (jumps 0-100-0%)	± 0.5% to max. ± 5%	± 0.5% to max. ± 5%
Frequency	50Hz ± 1%	50Hz ± 1%
Frequency Tolerance	± 0.1% (Auto-synchronized), ± 1% (Synchronized with the mains)	± 0.1% (Auto-synchronized), ± 1% (Synchronized with the mains)
Power Factor	0.8	0.8
Overload	50% rated load for 10 second	50% rated load for 10 second
Output regulation	100%	100%
GENERAL DATA		
Regulation	Yes automatic regulation	Yes automatic regulation
Construction	Modular and mechanical	Modular and mechanical
Correction speed voltage Control	Fast response 75 Volt/Second	Fast response 75 Volt/Second
Operating work	Motor controlled, variable transformer, voltage boost system	Motor controlled, variable transformer, voltage boost system
Each phase	Independent regulation	Independent regulation
Display panel	Analogue or digital	Analogue or digital
Voltmeter	Output meter for each phase	Output meter for each phase
Protection	With fuse for input voltage (OPSIONAL)	With fuse for input voltage (OPSIONAL)
Over voltage/under voltage protection circuit	Optional (WITH MICROPROCESSOR SYSTEM)	Optional
Maintenance By-Pass	A switcher set with three positions	A switcher set with three positions
Switcher Positions "0"	OFF	OFF
Switcher Positions "1"	Direct connection without regulator, by-pass	Direct connection without regulator, by-pass
Switcher Positions "2"	Work positions (connection with regulator)	Work positions (connection with regulator)
Housing steel coated	min. 2mm.	min. 2mm.
High productivity	98%	98%
Main structure	The main components of the regulator are the variable auto-transformer and the booster transformer. All phases of the regulator independent and separately regulated. Stabilizer designed for heavy, industrial type usage.	The main components of the regulator are the variable auto-transformer and the booster transformer. All phases of the regulator independent and separately regulated. Stabilizer designed for heavy, industrial type usage.
PHYSICAL DATA		
Ambient Temperature	0°C to 40°C	0°C to 40°C
Relative Humidity	0% to 95% (noncondensing)	0% to 95% (noncondensing)
Noise Level	< 45-55 db (A)	< 45-55 db (A)
Operation Altitude	2000m.	2000m.
Color	RAL 7035	RAL 7035
MONITORING CONTROL DATA		
Power Management Display (PMD)	With Selector, Voltmeter, Control	With Selector, Voltmeter, Control
Phase Position	With show LED	With show LED
MICROPROCESSOR DATA		
Power Management Display (PMD)	optional	optional
Power Management Display (PMD)	With LCD, Selector, Mimic Diagram, Control	With LCD, Selector, Mimic Diagram, Control
Communication Port (Smart Port)	Serial RS 232 / Optional	Serial RS 232 / Optional
Communication Port (Dry Port)	8 Volt - free relays / Optional	8 Volt - free relays / Optional
SNMP	Yes (SNMP Universe Software)	Yes (SNMP Universe Software) optional
Control and Monitoring Software	Yes (EPC, Power Controller)	Yes (EPC, Power Controller) optional
Correction speed voltage Control	Fast response 200 Volt / Second	Fast response 200 Volt / Second
Control	Microcontroller (full automatic servo control)	Microcontroller (full automatic servo control)
Type of protection	IP20 microprocessor protection unit	IP20 microprocessor protection unit
Over voltage/under voltage protection circuit	Include with IP20 m.protection	Include with IP20 m.protection



AVS Automatic Voltage Stabilizer

THREE - PHASE



THREE - PHASE 15 - 1000 KVA
SIMPLE LOGIC 275 - 430 V

Model	Power	Dimension			
		Weight (kg)	Length (cm)	Width (cm)	Height (cm)
AVS 15 FS275	15 KVA	143	55	48	111
AVS 22.5 FS275	22.5 KVA	165	55	48	111
AVS 30 FS275	30 KVA	192	55	48	111
AVS 45 FS275	45 KVA	215	60	44	123
AVS 60 FS275	60 KVA	365	86	55	131
AVS 75 FS275	75 KVA	400	86	55	131
AVS 100 FS275	100 KVA	438	86	55	131
AVS 120 FS275	120 KVA	570	87	65	148
AVS 150 FS275	150 KVA	622	87	65	133
AVS 200 FS275	200 KVA	1214	156	90	133
AVS 250 FS275	250 KVA	1364	180	104	151
AVS 300 FS275	300 KVA	1541	180	104	151
AVS 400 FS275	400 KVA	1936	180	128	151
AVS 500 FS275	500 KVA	2520	180	130	152
AVS 600 FS275	600 KVA	2800	180	130	152
AVS 800 FS275	800 KVA	4500	240	200	175
AVS 1000 FS275	1000 KVA	6000	240	200	175

THREE - PHASE 15 - 1000 KVA
SIMPLE LOGIC 220 - 400 V

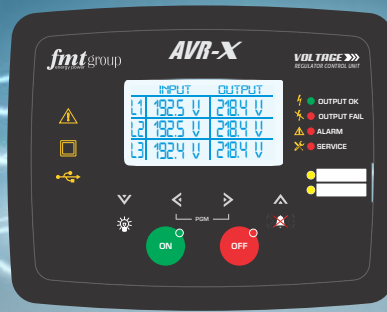
Model	Power	Dimension			
		Weight (kg)	Length (cm)	Width (cm)	Height (cm)
AVS 15 FS220	15 KVA	143	55	48	111
AVS 22.5 FS220	22.5 KVA	165	55	48	111
AVS 30 FS220	30 KVA	192	55	48	111
AVS 45 FS220	45 KVA	215	60	44	123
AVS 60 FS220	60 KVA	365	86	55	131
AVS 75 FS220	75 KVA	400	86	55	131
AVS 100 FS220	100 KVA	438	86	55	131
AVS 120 FS220	120 KVA	570	87	65	148
AVS 150 FS220	150 KVA	622	87	65	133
AVS 200 FS220	200 KVA	1214	156	90	133
AVS 250 FS220	250 KVA	1364	180	104	151
AVS 300 FS220	300 KVA	1541	180	104	151
AVS 400 FS220	400 KVA	1936	180	128	151
AVS 500 FS220	500 KVA	2520	180	130	152
AVS 600 FS220	600 KVA	2800	180	130	152
AVS 800 FS220	800 KVA	4500	240	200	175
AVS 1000 FS220	1000 KVA	6000	240	200	175

THREE - PHASE 15 - 1000 KVA
WITH MICROPROCESSOR 275 - 430 V

Model	Power	Dimension			
		Weight (kg)	Length (cm)	Width (cm)	Height (cm)
AVS 15 FM275	15 KVA	143	55	48	111
AVS 22.5 FM275	22.5 KVA	165	55	48	111
AVS 30 FM275	30 KVA	192	55	48	111
AVS 45 FM275	45 KVA	215	60	44	123
AVS 60 FM275	60 KVA	365	86	55	131
AVS 75 FM275	75 KVA	400	86	55	131
AVS 100 FM275	100 KVA	438	86	55	131
AVS 120 FM275	120 KVA	570	87	65	148
AVS 150 FM275	150 KVA	622	87	65	133
AVS 200 FM275	200 KVA	1214	156	90	133
AVS 250 FM275	250 KVA	1364	180	104	151
AVS 300 FM275	300 KVA	1541	180	104	151
AVS 400 FM275	400 KVA	1936	180	128	151
AVS 500 FM275	500 KVA	2520	180	130	152
AVS 600 FM275	600 KVA	2800	180	130	152
AVS 800 FM275	800 KVA	4500	240	200	175
AVS 1000 FM275	1000 KVA	6000	240	200	175

THREE - PHASE 15 - 1000 KVA
WITH MICROPROCESSOR 220 - 400 V

Model	Power	Dimension			
		Weight (kg)	Length (cm)	Width (cm)	Height (cm)
AVS 15 FM220	15 KVA	143	55	48	111
AVS 22.5 FM220	22.5 KVA	165	55	48	111
AVS 30 FM220	30 KVA	192	55	48	111
AVS 45 FM220	45 KVA	215	60	44	123
AVS 60 FM220	60 KVA	365	86	55	131
AVS 75 FM220	75 KVA	400	86	55	131
AVS 100 FM220	100 KVA	438	86	55	131
AVS 120 FM220	120 KVA	570	87	65	148
AVS 150 FM220	150 KVA	622	87	65	133
AVS 200 FM220	200 KVA	1214	156	90	133
AVS 250 FM220	250 KVA	1364	180	104	151
AVS 300 FM220	300 KVA	1541	180	104	151
AVS 400 FM220	400 KVA	1936	180	128	151
AVS 500 FM220	500 KVA	2520	180	130	152
AVS 600 FM220	600 KVA	2800	180	130	152
AVS 800 FM220	800 KVA	4500	240	200	175
AVS 1000 FM220	1000 KVA	6000	240	200	175



STABILIZER TECHNICAL SPECIFICATIONS POWER SUPPLY	Three Phase 3 Phase stabilizer 15 - 1000 kVA	Three Phase 3 Phase stabilizer 15 - 1000 kVA
INPUT DATA		
Voltage	275V - 435V + N	220V - 400V + N
Frequency	50Hz ± 1%	50Hz ± 1%
OUTPUT DATA		
Voltage	380V + N	380V + N
Voltage Tolerance	± 1% (linear load)	± 1% (linear load)
High accuracy (jumps 0-100-0%)	± 0.5% to max. ± 5%	± 0.5% to max. ± 5%
Frequency	50Hz ± 1%	50Hz ± 1%
Frequency Tolerance	± 0.1% (Auto-synchronized), ± 1% (Synchronized with the mains)	± 0.1% (Auto-synchronized), ± 1% (Synchronized with the mains)
Power Factor	0.8	0.8
Overload	50% rated load for 10 second	50% rated load for 10 second
Output regulation	100%	100%
GENERAL DATA		
Regulation	Yes automatic regulation	Yes automatic regulation
Construction	Modular and mechanical	Modular and mechanical
Correction speed voltage Control	Fast response 75 Volt/Second	Fast response 75 Volt/Second
Operating work	Motor controlled, variable transformer, voltage boost system	Motor controlled, variable transformer, voltage boost system
Each phase	Independent regulation	Independent regulation
Display panel	Analogue or digital	Analogue or digital
Voltmeter	Output meter for each phase	Output meter for each phase
Protection	With fuse for input voltage (OPTIONAL)	With fuse for input voltage
Over voltage/under voltage protection circuit	Optional (WITH MICROPROCESSOR SYSTEM)	Optional (WITH MICROPROCESSOR SYSTEM)
Maintenance By-Pass	A switcher set with three positions	A switcher set with three positions
Switcher Positions "0"	OFF	OFF
Switcher Positions "1"	Direct connection without regulator, by-pass	Direct connection without regulator, by-pass
Switcher Positions "2"	Work positions (connection with regulator)	Work positions (connection with regulator)
Housing steel coated	min. 2mm.	min. 2mm.
High productivity	98%	98%
Main structure	The main components of the regulator are the variable auto-transformer and the booster transformer. All phases of the regulator independent and separately regulated. Stabilizer designed for heavy, industrial type usage.	The main components of the regulator are the variable auto-transformer and the booster transformer. All phases of the regulator independent and separately regulated. Stabilizer designed for heavy, industrial type usage.
PHYSICAL DATA		
Ambient Temperature	0°C to 40°C	0°C to 40°C
Relative Humidity	0% to 95% (noncondensing)	0% to 95% (noncondensing)
Noise Level	< 45-55 db (A)	< 45-55 db (A)
Operation Altitude	2000m.	2000m.
Color	RAL 7035	RAL 7035
MONITORING CONTROL DATA		
Power Management Display (PMD)	With Selector, Voltmeter, Control	With Selector, Voltmeter, Control
Phase Position	With show LED	With show LED
MICROPROCESSOR DATA		
Power Management Display (PMD)	optional	optional
Power Management Display (PMD)	With LCD, Selector, Mimic Diagram, Control	With LCD, Selector, Mimic Diagram, Control
Communication Port (Smart Port)	Serial RS 232 / Optional	Serial RS 232 / Optional
Communication Port (Dry Port)	8 Volt - free relays / Optional	8 Volt - free relays / Optional
SNMP	Yes (SNMP Universe Software)/optional	Yes (SNMP Universe Software)
Control and Monitoring Software	Yes (EPC, Power Controller)	Yes (EPC, Power Controller)
Correction speed voltage Control	Fast response 200 Volt / Second	Fast response 200 Volt / Second
Control	Microcontroller (full automatic servo control)	Microcontroller (full automatic servo control)
Type of protection	IP20 microprocessor protection unit	IP20 microprocessor protection unit
Over voltage/under voltage protection circuit	Include with IP20 m.protection	Include with IP20 m.protection



UPS / INVERTER

INDUSTRIAL RACKTOWER MODULAR

fmt ups-inverter
energy power

BACKUP SERIES
1-3 kVA

Work: online,
1:1 phase,
PF: 0.6

FOCUS SERIES
1-3 kVA

Work: online,
1:1 phase,
PF: 0.9

FOCUS SERIES
6-10 kVA

Work: online,
1:1 phase,
PF: 0.9

FUTURELINE SERIES
10-30 kVA

Work: online,
3:3 phase,
PF: 0.9





1 - 6400 kVA

rectifier



fnt inverter
energy power

POWER AC/DC

battery



fnt battery
energy power

POWER LIFE

control panel



fnt panel
energy power

POWER DSP

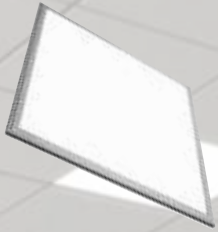
Advantages...

- 1 Data Loss Protection
- 2 Reliable Power Source
- 3 Protection from Power Fluctuation
- 4 Offers Surge Protection
- 5 Maintenance of the Battery Charge



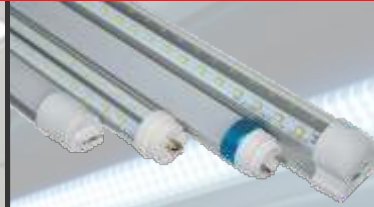
QUALITY SAFETY WARRANTY





LED PANEL LIGHT

SQUARE 36W
600x600 mm
6000-6500K
AC 100-240V, PF0.9



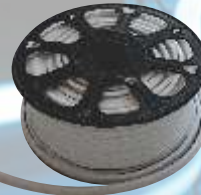
LED TUBE LIGHT

9W-25W
600-1500 mm
6000-6500K
AC 100-265V, PF0.9



LED PANEL LIGHT

ROUND/SQUARE
6W-12W-18W
121x29, 171x29 mm
226x29, 120x35 mm
172x35, 225x35 mm
6000K, PF0.8
Beam angle 120°
AC 90-265V



LED NEON FLEX

4.5W-8W, AC230V
10x2.2 mm
14x6.5 mm
2700-3000K
6000-6500K



NEW EVOLUTION

www.fmtledlighting.com



INDOOR
LED DOWNLIGHT
LED STRIPS
LED PANEL
LED TUBE
LED NEON FLEX

OUTDOOR
LED PROJECTOR
LED STREET
LED WALLWASHER
LED NEON FLEX

LED SCREEN
FLOOR
INDOOR
OUTDOOR

PREMIUM QUALITY

green energy ecological light variety of colours

LED DESIGN

EXTERIOR DESIGN
INTERIOR DESIGN
SPECIAL SOLUTION

Why Solar Energy?

Solar power generation has emerged as one of the most rapidly growing renewable sources of electricity. Solar power generation has several advantages over other forms of electricity generation:



- ✓ Reduced Dependence on Fossil Fuels
- ✓ Environmental Advantages
- ✓ Matching Peak Time Output with Peak Time Demand
- ✓ Modularity and Scalability
- ✓ Government Incentives





PROFESSIONAL STAFF

PROFESSIONAL WORK





 **ALBANIA**

Address: "Rruga e Aeroportit SH60",
2 km from Tirana International Airport,
Rinas - Fushe Kruje - Albania
Tel/Fax: +355 4 2407475
Mob: +355 69 20 64 458
Mob: +355 69 40 09 193
Mob: +355 69 70 57 620
e-mail: info@fmtgroup.al
web: www.fmtgroup.al

 **KOSOVO**

Str. Magjitrailja Prishtine-Kosove / Prishtine
Tel: +377 44400460
Tel: +377 45460065
e-mail: kosova@fmtgroup.al
web: www.fmtgroup.al

 **MONTENEGRO**

Str. Tuzi BB - Podgorice
e-mail: montenegro@fmtgroup.al
web: www.fmtgroup.al



SCAN OUR LOCATION